

Apricot Capital, iOS version



1. Overview

Apricot Capital is a client application designed specifically for iPhone. The application connects to the server and allows receiving market data in real time and conducting trading operations.

The application provides the following services:

- *viewing current quotes for exchange instruments;*
- *monitoring current status of the portfolio;*
- *placing orders, concluding trades;*
- *monitoring trading on charts;*
- *setting up notifications;*

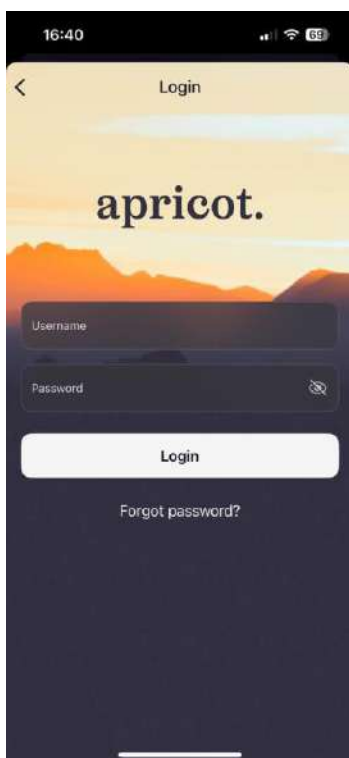


2. Getting started

2.1 Installation

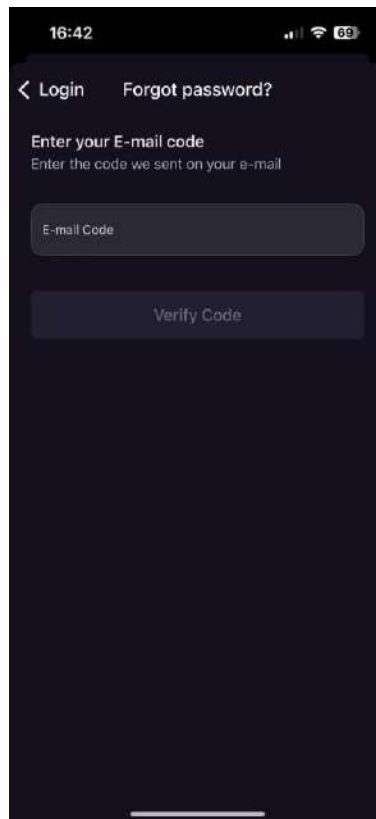
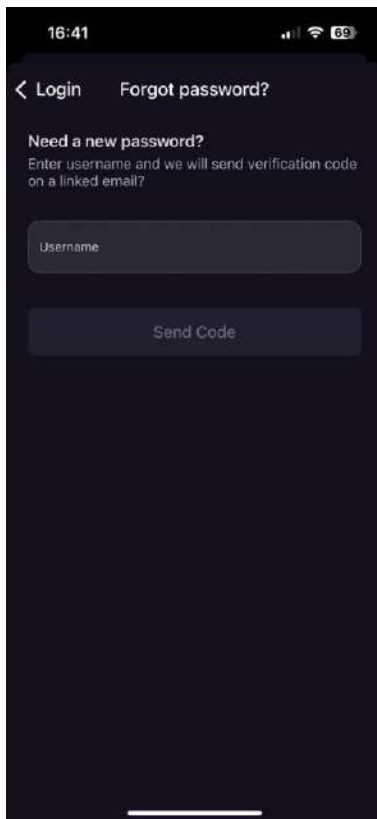
To start working with Apricot Capital, download the application from App Store and install it.

2.2 Login After the application starts, the authorization window is opened.



Enter login and password received from the broker and tap Log in. If you don't have a brokerage account, contact the broker. If you don't remember your password press "Forgot Password" button and reset your password by typing your username and passing verification to your registered email.





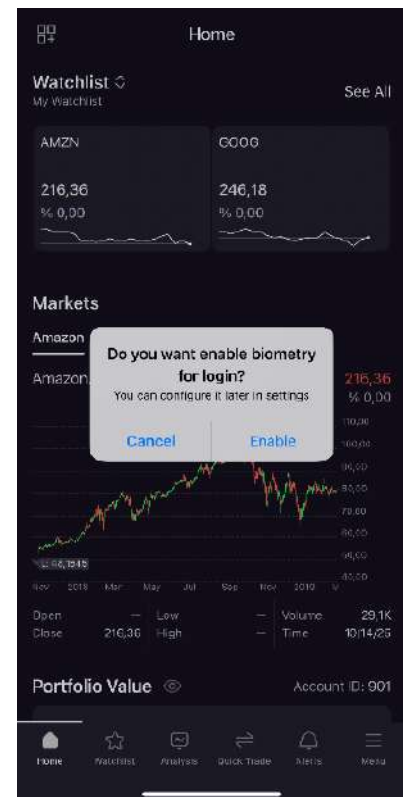
2.2.1 Touch ID and Face ID

User can set up the authorization by Touch ID or Face ID if it is supported by the device.

2.3 Navigation

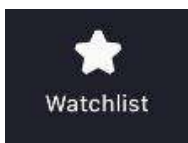
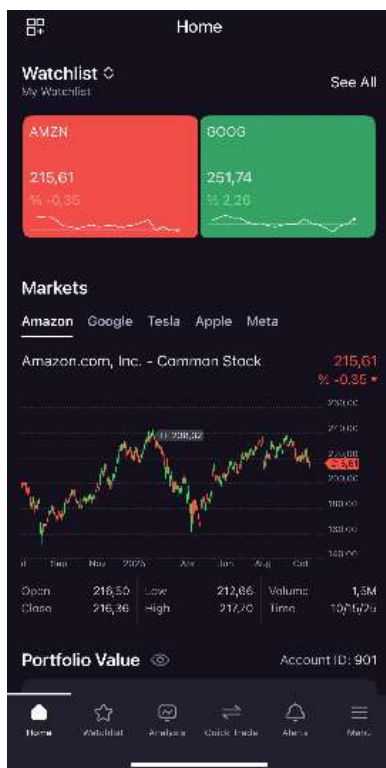
The main navigation panel is located at the bottom of the screen. It provides quick access to the key sections of the application:

Home, Watchlist, Analysis, Quick Trade, Alerts, and Menu.



Menu

The **Home** page displays a quick overview of your portfolio and market activity



Users can view their **Watchlist**, monitor selected instruments, and check **market trends** through charts.

The chart shows real-time price changes, including open, close, low, and high values, as well as trading volume and date.



My Watchlist  

Public Lists My Lists

My Watchlist

Symbol	Last	%Chg.	Vol.Amount	
AMZN	215,61	-0,35	322,7M	10
GOOG	251,74	2,26	124,4M	10
TSLA	435,155	1,38	1,6B	10
META	717,68	1,22	236,0M	10
XPO	129,14	-0,20	1,6M	10



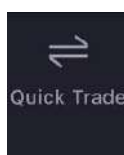
The **Analysis** section provides a detailed overview of individual stock performance and market information.

Users can select any stock (for example, *Apple Common Stock*) from their portfolio or watchlist to analyze.

This screen displays:

Market Info – key trading details such as current price, daily change, volume, and time. and liquidity.

a.

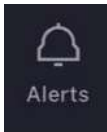


Quick Trade

This section allows users to execute buy or sell orders quickly and efficiently without navigating through multiple menus.

a.

- This screen includes:
 - **Instrument Selection** – choose the desired stock or trading instrument directly from the dropdown list.
 - **Order Type** – select between market, limit, or stop orders.
 - **Price and Quantity Fields** – enter the desired trade parameters before confirmation.
 - **Buy / Sell Buttons** – instantly place an order with a single tap.
 - **Order Summary** – a brief confirmation of trade details before execution.
-



The **Alerts** section enables users to set up personalized notifications for important market events and price movements.

Users can create alerts based on:

- **Price Levels** – receive notifications when a stock's price reaches a specific target.
 - **Percentage Change** – track instruments that move beyond a defined daily or hourly percentage.
 - **Volume or Activity** – get alerts for unusual trading activity or significant volume changes.
 - **News Updates** – stay informed about relevant financial news affecting selected instruments.
-

2.4 Sign Out

To log out of the application, open the menu located in the bottom right corner and select "**Go to Login Page**".



3. Trade

Order Entry Section

The screenshot shows the 'Order Entry' interface for AAPL. At the top, the time is 16:54 and the battery is at 67%. The stock symbol 'AAPL' is entered in the search bar. Below the search bar, there are buttons for 'SELL' and 'BUY'. The order type is set to 'LIMIT'. The price is 246.70 and the amount is 0.00. The lot is 0. The order is set to 'Day'. A 'SEND' button is at the bottom. Below the order entry section, there is a 'MARKET INFO' table.

MARKET INFO			
Bid	246.42	Ask	246.50
Open	—	Close	246.70
Low	—	High	—
52Low	169.2101	52High	288.62
Floor	—	Ceiling	—
Volume	54.9K	Vol.Amount	13.5M
Net Change %	0.00	Net Change	0.0000
VWAP	—		

- Search Bar - Enter the stock symbol (e.g., AAPL) to find the desired security.
- Buy / Sell Toggle — Choose whether you want to buy or sell shares.
- Order Type (LIMIT) - Defines how your order will be executed:
LIMIT means you specify the price you're willing to pay or accept.
Market means you execute order at that time's market price
- Price (1,38) - The limit price at which you want to buy or sell the stock.
- Amount (0,00) - Enter the total number of shares you want to trade.
- Lot (0) - Number of lots to trade.

a.

- Validity (Day) - Defines how long the order will remain active:

Day means the order will expire at the end of the trading day if not executed.

- Portfolio (0) - Displays your current holdings of this stock.
- SEND Button — Submits your trade order once all fields are filled.

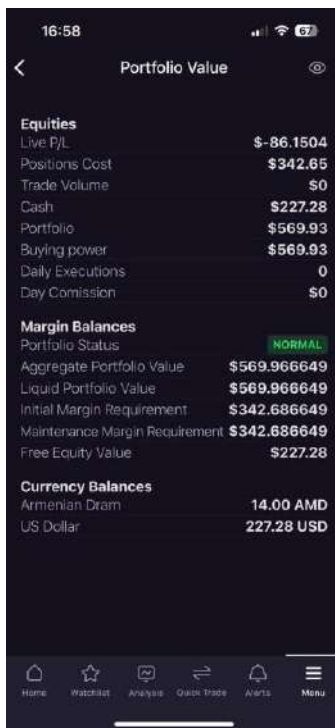
4. Portfolio Management Guide

4.1 Portfolio Value Screen

- Equities
 - Live P/L – Depo positions profit and loss real time in USD
 - Positions Cost – Depo position value (quantity multiplied current last price) in USD
 - Trade Volume – The volume of daily trades (quantity multiplied trade execution price)
 - Cash – Cash positions of USD
 - Portfolio – Portfolio value cash and depo in USD
 - Daily Executions / Day Commission – Definitions
 - Buying power - $\text{Equity}(\text{CashT0} + \text{Stock positions cost}) - \text{SUM}(\text{Stock Positions Cost Credit})$ //Cost credit is temporary set to 0
 - Daily executions - How many orders are executed during the day
 - Day commission - The amount of the daily charged commissions
- Margin Balances
 - Portfolio Status – The trading status of a user if it's normal margin call and terminating or not defined if the account is non tradable
 - Aggregated Portfolio Value – Net value of all positions (cash+depo) including margin loans and short security positions



- Liquidation Portfolio Value – Net Value of all marginal positions (marginal currencies + marginal securities)
- Initial / Maintenance Margin Requirements – Requirement for portfolio net value. If the portfolio value is less than initial then opening new positions will be restricted.
- Maintenance Margin Requirement - Minimum requirement of net portfolio value. If net portfolio value is less than initial margin then broker closes positions until portfolio value becomes more than initial margin
- Free Equity Value – The difference between liquid portfolio value and initial margin requirement (free liquidity)
- Currency Balances
 - Different currencies existing in the portfolio
 - Explanation of multi-currency holdings



The screenshot shows the 'Portfolio Value' screen in the Apricot Capital app. It displays various financial metrics under three main sections: Equities, Margin Balances, and Currency Balances. The status is 'NORMAL'.

Equities	
Live P/L	\$ -86.1504
Positions Cost	\$342.65
Trade Volume	\$0
Cash	\$227.28
Portfolio	\$569.93
Buying power	\$569.93
Daily Executions	0
Day Commission	\$0

Margin Balances	
Portfolio Status	NORMAL
Aggregate Portfolio Value	\$569.966649
Liquid Portfolio Value	\$569.966649
Initial Margin Requirement	\$342.686649
Maintenance Margin Requirement	\$342.686649
Free Equity Value	\$227.28

Currency Balances	
Armenian Dram	14.00 AMD
US Dollar	227.28 USD



4.2 Portfolio and Orders

Portfolio and Orders			
Account ID: #1803			
\$999,999.93			
Live P/L			
\$—			
Positions Cost			
\$—			
Trade Volume			
\$—			
Orders Positions			
Symbol	Side/Status Type	Size/Total Size Filled Size	Fill
AAPL	Buy / Rejected Limit	1 / 1 0	25%
LAB	Buy / Rejected Limit	1 / 1 0	0%
LAB	Buy / Working Limit	4 / 4 0	0%
ASML	Buy / Working Limit	5 / 5 0	1.03%

4.2.1 Account Summary

- Account ID – A unique identifier for your trading account. Used for internal reference and support.
- Portfolio Value (\$999,999.93) – The total current value of your account, including cash and any active positions.
- Live P/L (Profit/Loss) – Shows your unrealized profit or loss from open positions. It remains blank if no active trades exist.
- Positions Cost – The total cost of your currently held positions (if you have any open trades).
- Trade Volume – The cumulative amount traded within a selected period .






4.2.2 Orders Tab

Displays all current, pending, or past orders that you have placed.

Column	Description
Symbol	The stock or instrument ticker (e.g., AAPL, LAB, ASML).
Side/Status Type	Shows whether the order is a Buy or Sell, and its current status (e.g., <i>Working</i> , <i>Rejected</i> , <i>Filled</i>).
Order Type	Indicates the type of order — for example, <i>Limit</i> (executed only at a specific price) or <i>Market</i> (executed immediately at market price).
Size / Total Size	The quantity of shares or contracts ordered versus the total order size. Example: “1 / 1” means the order size was 1 unit.
Filled Size	How much of your order has been successfully executed (if any).
Fill Price	The average price at which the order was filled (shows once filled).

4.2.3 Order Status Color Codes

Status	Color	Meaning
Working	 Yellow	The order is active and waiting to be filled on the market.
Rejected	 Red	The order was not accepted - may be due to insufficient funds, wrong symbol, invalid order type, or trading restrictions.
Filled	 Green	The entire order was successfully executed.

